

WCE DANCE

WEST COAST ELITE DANCE TEAM
NATIONALS

MARCH 5 - 7, 2027

LONG BEACH CONVENTION CENTER



HIGH SCHOOL AND MIDDLE SCHOOL DANCE REGIONALS

December 12, 2026
Granada Hills, CA

December 13, 2026
Riverside, CA

January 9, 2027
Chino Hills, CA

January 10, 2027
Westlake Village, CA

January 16, 2027
Calabasas, CA

January 17, 2027
San Diego 1, CA

January 23, 2027
Newbury Park, CA

January 23, 2027
Las Vegas, NV

January 23, 2027
San Jose, CA

January 30, 2027
Glendale, CA

January 30, 2027
Lake Elsinore, CA

February 6, 2027
Castaic, CA

February 6, 2027
Torrance, CA

February 7, 2027
San Diego 2, CA

February 13, 2027
Placentia, CA

February 13, 2027
Carlsbad, CA

February 20, 2027
San Jose, CA

February 20, 2027
San Diego 3, CA

February 21, 2027
Saugus, CA



@wcedance

Register Today: WestCoastEliteDance.com

WCE

DANCE TEAM NATIONALS

NATIONALS

MARCH 5 - 7, 2027

LONG BEACH CONVENTION CENTER ARENA

DANCE TEAM DIVISIONS

Duet/Trio (2-3)
Extra Small (4-5)
Small Contemporary (6-10)
Small Hip Hop (6-10)
Small Lyrical (6-10)
Small Jazz (6-10)
Small Pom/Song (6-10)
Small All Male (6-10)
Medium Jazz (11-19)
Medium Pom/Song (11-19)
Medium Hip Hop (11-19)
Medium Lyrical (11-19)
Medium Contemporary (11-19)
Large Hip Hop (20+)
Large Jazz (20+)

Large Contemporary (20+)
Large Lyrical (20+)
Large Pom/Song (20+)
Large All Male (11+)
Co-Ed Dance (6+)
Open (6+)
Character/Production (6+)
Kick (6+)
Military (6+)
Spirit (6+)
Dance/Drill (6+)
Ballroom (6+)
Pep Flag 1 (3+)
Pep Flag 2 (3+)
Student Choreography (6+)



Awarding Over
\$25,000
IN SCHOLARSHIPS
& PRIZE MONEY

EVENT SCHEDULE

The following schedule is subject to change based on registration:

Friday Competition- (7am-9pm) Silver Solos, Gold Solos, Middle School Solos, Duet/Trio, Extra Small, Small Contemporary.

Dancer of the Year Dance Off (8pm-10pm) Friday Evening.

Saturday Competition (7am-9pm) Small Hip Hop, Small Jazz, Small Lyrical, Medium Hip Hop, Medium Contemporary, Medium Pom, Large Jazz, Large Lyrical, Large Contemporary, Military, Middle School.

Sunday Competition (7am-3pm) Small Pom, Medium Lyrical, Medium Jazz, Large Pom, Large Hip Hop, Small All Male, Large All Male, Open, Spirit, Character/Production, Ballroom, Dance/Drill, Co-Ed Dance, Student Choreography, Pep Flag 1, Pep Flag 2.

Closing Gala & Finals Competition(3pm-9pm)
Sunday Evening.

CLOSING GALA & FINALS COMPETITION

Finalists from all Gold Categories and the Pom Categories (NEW) will re-compete (top 30% for each division). Finalists from the Silver & High School Divisions will re-compete for any category that has 8 or more entries (top 20%). High School category champions that receive a 90 or higher will also be featured in the Gala. All dances will be re-scored at the Gala. All specialty awards for both Silver and Gold levels (Grand Champions, top overall, top style...etc.) will be awarded at the closing of the Gala. Only dances in the Gala will qualify for specialty awards.



WestCoastEliteDance.com

DANCE TEAM NATIONALS: LEVELS



In order to accommodate all dancers and teams, there will be **three levels** of competition at Nationals. Below is a general guideline for choosing levels.

Please note: Character, Open, All Male, Co-ed Dance, Co-ed Hip Hop, Pom, Military, Dance/Drill, Pep Flag, Ballroom and Kick categories will not be divided by levels and should use the "High School" class when registering.

Silver Level: Designed so dancers with similar training and experience can compete against each other. Suggested for dances that receive 89.9 or below at Regionals.

Gold Level: For highly competitive entries. Suggested for dances that receive 90 or higher at Regionals.

JV/Novice Level: For teams with both a JV and Varsity level. Also for newly formed teams or teams with dancers that have less than two years of competition experience. The JV/Novice level is not eligible for finals competition or top overall awards. Available categories include Jazz, Contemporary, Hip Hop, Lyrical, Pom.

Buffer Range: For any dance that receives a 92 or higher at any WCE Regional competition, that dance will automatically be placed in the Gold Division at WCE Nationals.

SOLOS AND IMPROV

SOLOS:

We accept **UNLIMITED** solos! **NEW** -We accept unlimited entries from teams for solos, however each dancer is only permitted to compete **one solo**. Solos will also be divided into Silver and Gold levels. The same guidelines for levels should be used when registering soloists. All Gold and Silver finalists will re-compete in the Dancer of the Year Dance Off.

IMPROV EXPERIENCE:

Dancers may sign up at competitions for the Improv Experience. Dancers will improv in groups and finalists will be chosen to move on to the next round until we have our Improv Champion. **FEE: \$30 per Dancer**

**DANCE TEAM
NATIONALS
MARCH 5 - 7, 2027
LONG BEACH CONVENTION CENTER**

WCE
DANCE TEAM NATIONALS



REGISTER TODAY AT:
westcoastelitedance.com

DANCE TEAM NATIONALS AWARDS

Grand Champion: The 2027 National Grand Champions will receive **\$2,000!** First and second runner up will also receive cash prizes. All team entries will be eligible for the Grand Champion award, regardless of level placement.

Top Overall: Will go to the highest scoring dance in the Gala. 2nd through 10th place Overall will also be awarded. Cash prizes will be awarded for 1st-5th place and the winner will receive **\$1,000!**

Silver Top Overall: Will go to the highest scoring Silver dance in the Gala. 2nd through 10th place Overall will also be awarded. Cash prizes will be awarded for 1st-5th place, and the winner will receive **\$500!**

Top...: Awards will be given to the highest scoring entries in the Gala in Hip Hop, Lyrical, Jazz, Contemporary, All Male and Pom/Song in both the Silver and Gold levels. Each award in the Gold Division will receive **\$1,000**, and each award in the Silver will receive **\$500!**

Specialty Awards: Judges will select dances that stood out throughout the weekend. Awards include: choreography, entertainment, technique, storytelling, commitment, and performance.

Awards will also be given for placement in categories in both the Silver and Gold levels.



PRIZE MONEY:

Grand Champions: **\$2000**
Top Overall: **\$1000**
Top Overall Silver: **\$500**
Top...: **\$1000**
Top...: **\$500**

ADMISSION

WCE NATIONALS :

Full Weekend Pass - \$61
(Includes: Friday, Saturday Competition, Dance Off & Gala)

One Day Competition - \$36

Children 6-10 - \$36
(full weekend pass)

Children 6-10 - \$21
(one day competition)

Children 5 & under- Free

NATIONALS PRICING:

\$399: Group Routine
\$190: Choreographed Solo
\$30: Improv Experience
\$35: Registration Fee Per Dancer

WCE
DANCE TEAM NATIONALS



WCE

DANCE TEAM NATIONALS

UNIVERSITY RECRUITMENT EXPERIENCE

MARCH 6, 2027

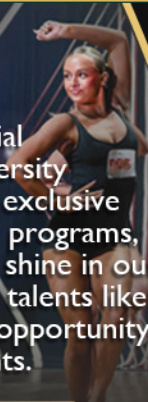


ALL DANCERS ARE INVITED TO REGISTER!!!



University Recruitment Experience is on March 6 during Dance Team Nationals.

Dancers are invited to unlock their potential and elevate their dance career at our University Recruitment Experience. Dancers can gain exclusive access to the nation's top dance teams and programs, connect directly with industry leaders, and shine in our audition-style workshop to showcase their talents like never before. Don't miss this unparalleled opportunity to launch your dance journey to new heights.



WCE UNIVERSITY RECRUITMENT EXPERIENCE INCLUDES:

Audition Style Workshop

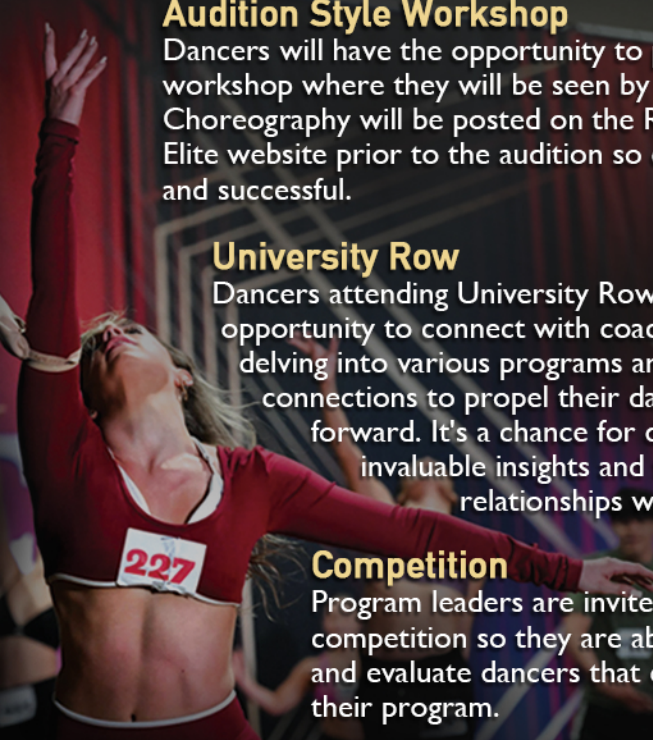
Dancers will have the opportunity to participate in our audition style workshop where they will be seen by all participating program leaders. Choreography will be posted on the Recruitment page of our West Coast Elite website prior to the audition so dancers can attend feeling prepared and successful.

University Row

Dancers attending University Row will have the unique opportunity to connect with coaches and program leaders, delving into various programs and forging close connections to propel their dance careers forward. It's a chance for dancers to gain invaluable insights and foster meaningful relationships with industry professionals.

Competition

Program leaders are invited to attend solo and group competition so they are able to continue to scout and evaluate dancers that could be a match for their program.



TESTIMONIALS

"The WCE Recruiting Experience was such a great event! Getting to connect with dancers on an individual basis while also getting to see them interact and work in a team environment was such a beneficial experience in our recruiting process."
The Ohio State University, Asst. Coach



UCSD had a great time at the event. It was well run and the talent level was impressive. We had a few students from the college recruitment experience attend our spring clinic so there were clear successes with outreach! I enjoyed the mixer too and had great conversations with other college coaches and high school coaches! Katie Schneiderman UCSD



"Traveling all the way from Louisiana to California for the University Recruitment Experience, we weren't sure what to expect. The second we arrived, we were welcomed by all the staff and felt like we were part of the WCE family! We discovered incredible dance programs with tons of potential recruits, made many meaningful connections, and got to experience a well-run, full production event. We will be returning next year and cannot wait to see what the URE and WCE has in store!"
Kalyn Voisin- Louisiana Rajen Cajuns

COST: \$150 per dancer

Register Today: WestCoastEliteDance.com

"The University Recruitment Experience was incredibly beneficial and provided valuable opportunities for growth and learning. I am grateful WCE is providing this opportunity and exposure to high school teams and dancers. Thank you WCE!"

"The University Recruitment Experience was such an amazing addition to the event. As a freshman mom it gave me insight into what new opportunities could be offered to our dancers after high school. We are excited to continue each year until she's ready to decide what she wants to do next."

"University Row was an amazing experience as a parent. My dancer and I were able to have an in-depth conversation with each university or college that attended. As a parent, I learned so much about the college dance process."

WCE DANCE

REGIONAL CHAMPIONSHIPS



Grand Champions

In addition to the prestigious title, the Grand Champions of each competition will be awarded Grand Champion merchandise and a Grand Champion banner! In order to qualify for this award, a minimum of four team dances must be competed. The four highest scoring routines per team will be averaged together. The team with the highest average will be awarded the title of WCE Grand Champions.

Dancer of the Year

Teams are allowed unlimited solo entries at every Regional Competition. **NEW:** Each dancer is only permitted to compete one solo. If space permits, teams will receive an email 6 weeks prior to competition inviting dancers to register additional solos on a first come first serve basis. From each competition, the top 5 highest scoring soloists will receive a scholarship to the 2027 WCE Summer Dance Experience. The categories will be divided by grades: Freshmen, Sophomores, Juniors, Seniors. The top ten soloists will compete again that evening for scholarships, and the title of WCE Dancer of the Year. *Awards per individual categories will also be presented.*

Improv Experience

Dancers may register onsite at the competition for the Improv Experience. Dancers will Improv in groups. Judges will select finalists from each group to continue to the next round(s) until we have our Improv Champion! 2nd & 3rd place will also be awarded. The Improv Champion will win a full scholarship to our Summer Dance Experience.

Awards

In addition to placement in divisions, Grand Champions, and Dancer of the Year, WCE will also award teams for excellence in choreography, technique, and performance.

As a small-town Idaho team attending our first national competition, we didn't quite know what to expect—but WCE exceeded every expectation. The entire experience was incredibly impactful for my dancers, providing not only high-level competition but also unforgettable memories and growth. We're so excited to continue being part of the West Coast Elite community." - Savannah: Coach Post Falls Idaho

TESTIMONIAL

PRICING

\$195: Group Routine

\$150: Choreographed Solo

\$20: Improv Experience

\$25: Registration Fee
per dancer



TESTIMONIALS

"WCE Dance Team Nationals was such a positive and well-run experience for our team. The production quality, supportive atmosphere, and professionalism of the staff made our dancers feel valued and excited to perform. It's truly an event that celebrates dancers while giving them an incredible performance opportunity. Thank you for creating such a memorable experience for our team!" - Brandy: Coach Westlake

"Bringing our team to any WCE Summer Camp, WCE Regional or the WCE National Competition legitimately feels like showing up to a family reunion! The staff treats us all like family, the coaches & dancers from other teams are so friendly & the positive vibes are off the charts! The fierce competition, the invaluable recruitment experiences provided, & the memories we make will keep us coming back year after year!" - Nicole: Coach Palm Desert

REGISTER TODAY AT:
westcoastelitedance.com

REGIONAL CHAMPIONSHIPS

WCE DANCE

BREAKDOWN OF DIVISIONS

Duet/Trio: Any dance style or form of dance is acceptable.

Extra Small: Any dance style or form of dance is acceptable.

Jazz: Any form of jazz dance is acceptable. Jazz favors hard hitting movements, strong lines and classical technique.

Contemporary: A routine that rejects the limitations of classical ballet and favors movement deriving from an abstract source. Contemporary routines are marked by self expression, storytelling and freedom of movement.

Lyrical: A fusion of ballet and jazz techniques. Lyrical routines express deep emotion or observations, derived from the lyrics or feeling of the song. Lyrical routines are marked by sustained transitions, breath of movement and elongated lines.

Hip Hop: Alternates fast paced sharp actions that involve body popping, and locking, with slower movements and freezes.

Open/Prop: A dance may only be competed in Open if it does not fit into any other division. I.e. a normal lyrical routine may not be competed in Open. Open is reserved for Prop and Other routines that do not fall under other division guidelines.

Character/Production: By use of choreography, costuming, and performance, the dance must convey a complete character, or revolve around a Broadway theme.

All Male: Any dance style or form is acceptable. All must be male.

Co-ed Dance: Routine must have male and female participants, and can be any form of jazz, theatrical, contemporary, or lyrical dance. (no less than 20% of either gender)

Kick: Majority of routine must be focused on kick combinations.

Spirit: Must be unique to your school and primarily focus on school tradition, spirit and crowd engagement. Can incorporate cheer, props and band music. Can be a field, sideline or half time routine.

Pom/Song: Poms must be used for at least 50% of routine.

Military: Routine emphasis is on precision dance movements, with sharp clean visuals.

Dance/Drill: Routine based on precision dance movements rather than military drill.

Student Choreography: Must be completely choreographed by a current team member(s).

Pep Flags: Must use 1 flag (Pep Flag 1) or 2 flags (Pep Flag 2) for the majority of the routine. Emphasis should be on strong clear visuals, formation changes, sharp movements, use of flag, tossing of flag(s) and may include kick lines and mounts.

Ballroom: Routine that incorporates traditional ballroom dance throughout the majority of the routine. This can include Waltz, Tango, Foxtrot, Quickstep, Pasodoble, Swing, Salsa, Samba, Rumba, Cha Cha and Jive.

Teams are permitted to compete in more than one routine per division

Music

Time Limits: All Solos must be under 2 mins. All team routines must be under 3 mins. The Character/Production division has a 5 min time limit.

All music must be uploaded to the registration website 5 days prior to competition. Penalties will occur for late music uploads.

Missing Media

At WCE, we take pride in providing professional photos and videos to our dancers and will make every effort to recover any missing media: however due to occasional technical issues, no credits or refunds will be issued.

Safety Guidelines and Appropriateness

Please use discretion to ensure dancers' safety when using lifts, stunts and mounts. Inappropriate movements, music, and explicit lyrics will result in a 5 point deduction per infraction.

Props & Debris

All props must be non-marking, and have rubber, padding, or wheels. Props must be able to be disassembled to fit through a doorway. Props are not permitted to be stored in the performance area. Teams will be held liable to any damage done to performance area or property. Any props or items thrown or released during a routine must be immediately cleaned up by the team. If cleanup takes longer than 30 seconds, a 1-point penalty per minute over will be assessed. Teams are responsible for all cleanup—please do not rely on WCE Dance staff.

Shoes

All shoes must be non marking. Bear claws, foot thongs, socks and bare feet are permitted.

"As a Coach, my favorite part of WCE competitions is the staff. They are always so friendly and welcoming, and they completely help ease the stress that can come with a hectic competition day! No question is too small or unimportant for them to answer, and they treat everyone with great kindness."

- Jennifer: Coach Villa Park

"We love WCE Nationals in Long Beach! The staff is amazing, friendly and supportive and the venue provides an experience for dancers like no other. The awards ceremonies bring all the energy! The dancers come away with a sense of accomplishment and excitement every time. We look forward to attending WCE Nationals in Long Beach each year!"

- Kim: Coach Lakeside Middle School

WCE DANCE



GENERAL ADMISSION

At the WCE Dance Regionals, General Admission is:

\$11 per person
Children 6-10: \$6
Children under 6: Free

All performers will receive a wristband and will not be charged admission. Each school will also receive two additional wristbands for their coaches/advisors.

See pricing for Nationals admission

Performance Area

The performance area for all team dances will be a high school regulation basketball court. Depending upon registration size for each competition, solo competition may be in a theater. Dimensions TBA.

Insurance

Each participant is required to turn in a completed WCE Dance, Inc. Medical Release and waiver or they will not be permitted to compete. Online medical release forms are due one week prior to the competition and can be accessed through the team's registration dashboard.

Registration

WCE will not alter any team's registration. Registration changes may be made by the team up until 10 days prior to Regionals (space permitting). Registration for Dance Team Nationals is due February 5, 2027. If you are attending a Regional after February 5th you have until the Monday after your final WCE regional by 5pm to adjust Silver/Gold Divisions.

TESTIMONIALS

"West Coast Elite Dance is our absolute favorite. The entire staff is always organized, on top of every detail, and incredibly friendly and reliable. They create such a positive experience for dancers and families alike. Nationals at the Long Beach Arena is amazing — it's a fantastic performance space and feels truly special for the dancers. The judging is always fair, professional, and consistent, which means so much. We're so grateful for everything West Coast Elite Dance does!"

— Sarah: Coach Torrey Pines

"WCE Dance Team Nationals is the highlight of my team's season, they always have so much fun in the positive environment created by the WCE staff and other teams!"

— Taylor: Coach VAAS Dance

"Our team had an outstanding experience at the WCE competition. The event was well organized, ran on schedule, and took place at great venues. What stood out most was how helpful and friendly the staff was throughout the weekend. It was especially valuable for our middle school team to compete against such strong, high-level programs in the middle school age group. Thank you, WCE. Our team is already looking forward to returning next season."

— Heather: Dorothy McElhinney MS

You may register online at westcoastelitedance.com. A \$200 deposit is due with the Registration. Space will not be saved for teams that do not turn in a deposit for each event. The competition order will be determined by the order in which deposits are received. Check, credit card and Venmo: (WCE-Dance) are all acceptable forms of payment. Full balances are due four weeks prior to competition. If payment reaches WCE 4 weeks after a competition, a 3% late charge will be assessed. No exceptions.

Waiting Lists: If a competition reaches capacity then every dance registered thereafter will be put on a waiting list. **SPACE IS NOT SAVED IF A ROUTINE IS NOT REGISTERED, REGARDLESS OF A TEAM'S PLACEMENT IN THE LINEUP.**

Please be aware that registration usually closes before the final registration deadline.

Expectations: At WCE, we encourage dancers and coaches to embrace good sportsmanship, enriching the experience beyond awards and trophies, and nurturing a community united by their passion for dance. We wish to celebrate each other's successes and create a supportive environment where every dancer thrives.

Eligibility: Any dancer registered in a group routine for high school or middle school must be enrolled at the school they are representing at the time of the competition.

Refunds: Absolutely no refund or credit will be given within ten days of the registered competition. For Regionals competitions, WCE will provide a credit to any entries dropped prior to ten days from the competition. For Nationals, no refund or credit will be given after February 5, 2027.

Disputes/Communication: Any dispute regarding eligibility or plagiarism must be handled in writing prior to the awards ceremony of the routine. The competition director will determine if action needs to be taken (if any) prior to or after the awards ceremony. The WCE staff and competition director are very busy at competitions. Any disputes, concerns, etc. should be addressed in writing either before or after the event to make sure the competition director or staff member has ample time to properly address the concern. **Please do not text or email WCE staff at an event. Please direct all questions to the staff on site.**



@wcedance

Register Now: Westcoastelitedance.com